

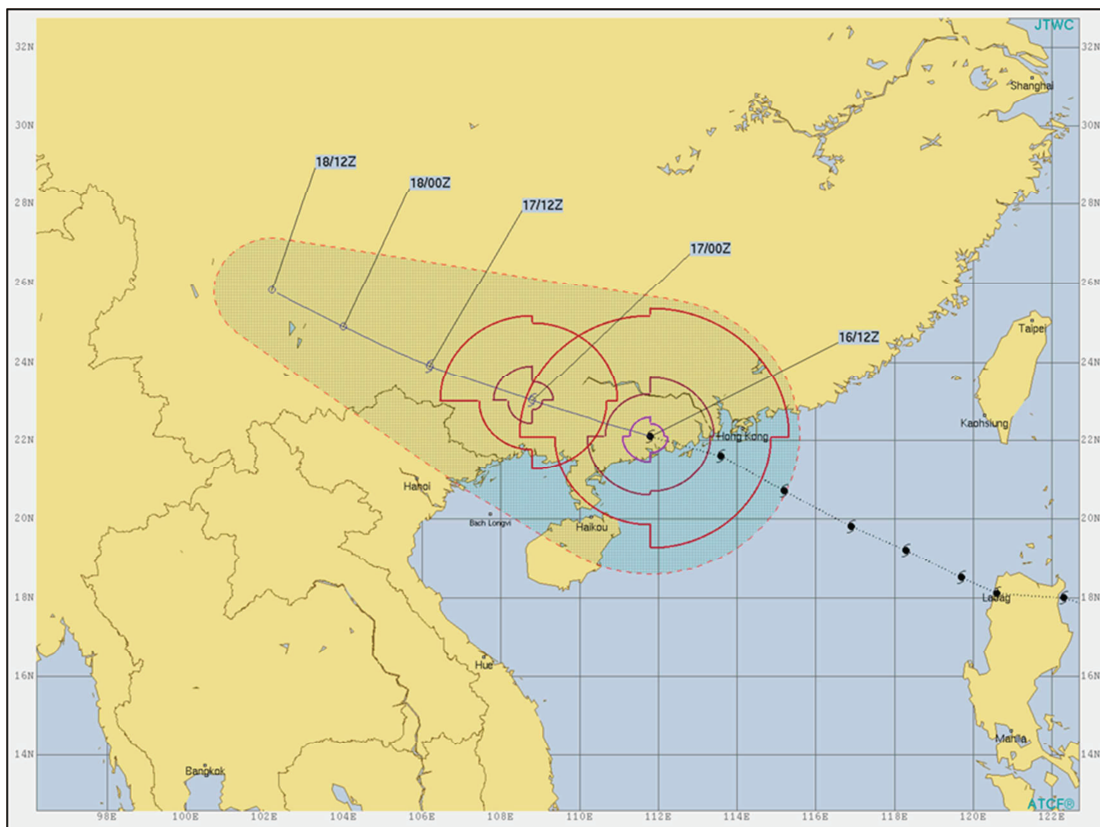
GC Briefing

September 16, 2018

Weather Sentinel Typhoon Mangkhut

In the Northwest Pacific Basin, Typhoon Mangkhut was located about 248 km (154 miles) west of Hong Kong after recently moving inland, according to the position report at 12 UTC September 16 issued by the Joint Typhoon Warning Center (JTWC). The storm maintains 1-minute sustained winds of around 130 km/hr (80 mph), a category-1 on the Saffir-Simpson Scale. Prior to landfall the JTWC reported 1-minute sustained winds of around 150 km/hr (90 mph), a category-1 on the Saffir-Simpson Scale, at 06 UTC September 16. The Japan Meteorological Agency (JMA) recently reported a central pressure of around 975 hPa (mb). Mangkhut should continue to rapidly weaken as it moves inland to the west-northwest over the coming hours. Heavy rainfall with the threat of flooding-flash-flooding and mudslides will be an ongoing threat in the meantime, along with strong, gusty winds, for areas well away from the center of circulation.

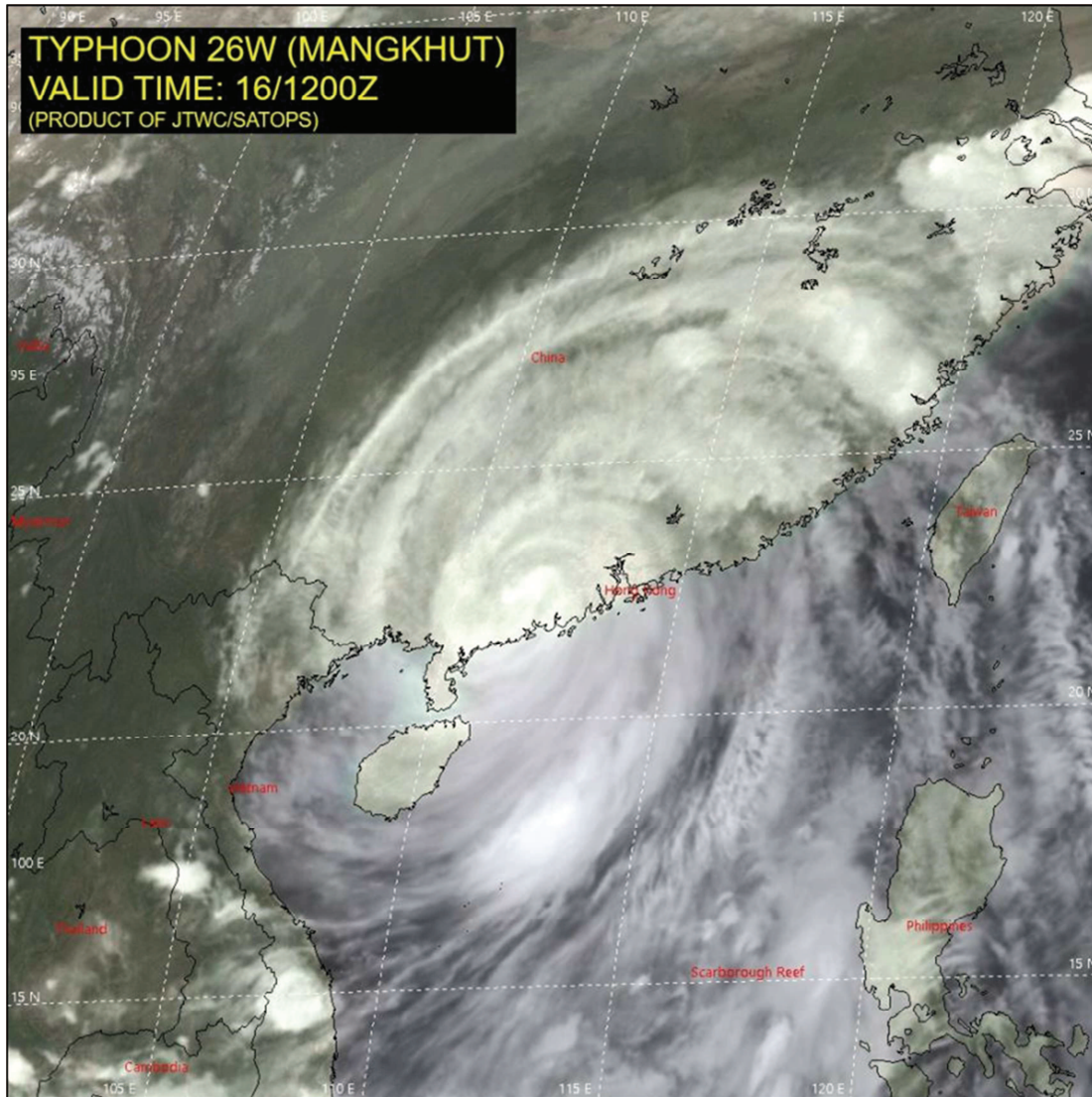
Local watches and warnings from official meteorological agencies, and statements from local emergency management agencies supersede this update, and should be closely heeded concerning matters of personal safety.



Position and Best Forecast (12 UTC September 16)

SOURCE: JTWC

<http://www.metoc.navy.mil/jtwc/products/wp2618.gif>



Satellite Image of Mangkhut (12 UTC September 16)

SOURCE: JTWC/SATOPS

Guy Carpenter & Company, LLC provides this report for general information only. The information contained herein is based on sources we believe reliable, but we do not guarantee its accuracy, and it should be understood to be general insurance/reinsurance information only. Guy Carpenter & Company, LLC makes no representations or warranties, express or implied. The information is not intended to be taken as advice with respect to any individual situation and cannot be relied upon as such. Please consult your insurance/reinsurance advisors with respect to individual coverage issues. Readers are cautioned not to place undue reliance on any historical, current or forward-looking statements. Guy Carpenter & Company, LLC undertakes no obligation to update or revise publicly any historical, current or forward-looking statements, whether as a result of new information, research, future events or otherwise.

This document or any portion of the information it contains may not be copied or reproduced in any form without the permission of Guy Carpenter & Company, LLC, except that clients of Guy Carpenter & Company, LLC need not obtain such permission when using this report for their internal purposes.

The trademarks and service marks contained herein are the property of their respective owners.